

JENSEN METAL PRODUCTS (NZ) LIMITED

**PRODUCT INFORMATION
AND PRICE LIST
DECEMBER 2004**

JENSEN METAL PRODUCTS (NZ) LIMITED

**Consistently High Standards of Workmanship....
Personalised and friendly customer service**

In business over 40 years

SPECIALISTS IN

Heating, ventilation, air-conditioning ducting and accessories

PRODUCTS

A large range of round, rectangular and general sheet metal products.

STOCK

Various range of items in stock

CUSTOM JOBS / GENERAL FABRICATION

We can make almost anything you require up to 1.6mm thickness in galvanised steel and up to 1.0mm in stainless steel.

LOCATION



252 CHURCH STREET, ONEHUNGA

'The big green building on the corner'

P O Box 12-467, Penrose, Auckland



NOTES ABOUT THIS CATALOGUE

1. A full page of all Jensen's standard products are pictured on pg 6
2. All prices are exclusive of GST and are ex factory
3. Trade / volume discounts apply
4. We are available to make anything to your own requirements
5. All items are in compliance with SMACNA duct standards
6. Diameters of stock round fittings are made to suit spiral internal diameter
7. Stock items returned for credit will incur a 20% restocking fee
8. In some instances a packaging fee may be charged

HOW TO ORDER

BY PHONE / FAX:

Phone us on (09) 634-3116 or fax (09) 636-4602 , and our sales staff will be happy to assist you with any queries and take your order.

BY POST:

Post to P O Box 12-467, Penrose, Auckland.

BY EMAIL:

Email details to enquiries@jensenmetals.co.nz

DROP BY:

Visit us at 252 Church Street, Onehunga, Auckland. This is a very good way to discuss difficult drawings and dimensions for projects that you require.

HOW TO OPEN AN ACCOUNT

We have enclosed a credit account application form. Please tear out, fill in both sides and post or fax it to us. We will contact you when the account has been opened.



CONTENTS

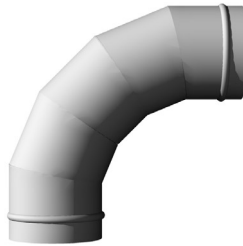
PRODUCT	PAGE
STANDARD PRODUCTS	6
OTHER PRODUCTS	7
PRODUCT EXAMPLES	8
SPIRATUBE	9 - 11
-STAINLESS STEEL	10
-GALVANISED	11
-CONNECTORS	10 - 11
-END CAPS	10 - 11
JENSEN BENDS	12 - 14
-ADJUSTABLE	13
-FIXED	14
REDUCERS	15
BRANCHES	16 - 19
-ANGLE TEE	16
-EQUAL TEE	17
-REDUCING TEE	18
-SADDLE T/OFF	19
-SADDLE T/OFF + DAMPER	19
SPLITTERS	20 - 21
-EQUAL	20
-UNEQUAL	21
FLANGED SPIGOT	22
QUADRANT DAMPER	22
ROUND PIPE	23
COWLS	24 - 25
-CHINAMANS HAT	24
-ANTIDOWN DRAFT	25
-GAS COWLS	25
FIRE DAMPERS	26 - 38
CREDIT ACCOUNT APPLICATION	



JENSENS STANDARD PRODUCTS



ADJUSTABLE BEND



FIXED BEND



ROUND PIPE



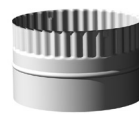
SPIRAL PIPE



UNEQUAL SPLITTER



EQUAL SPLITTER



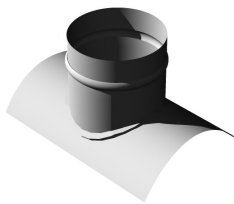
CONNECTOR



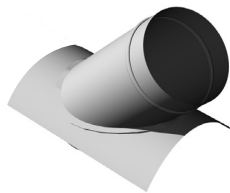
FLANGED SPIGOT



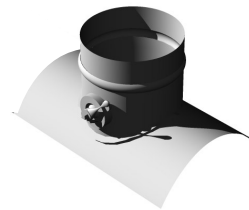
END CAP



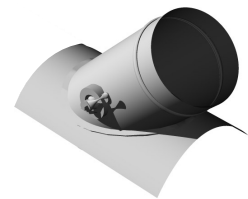
SADDLE TAKE-OFF 90



SADDLE TAKE-OFF 45



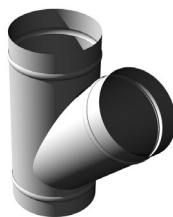
SADDLE TAKE-OFF 90
+ DAMPER



SADDLE TAKE OFF-45
+ DAMPER



EQUAL TEE



ANGLE TEE



UNEQUAL ANGLE TEE



REDUCING TEE



DAMPER



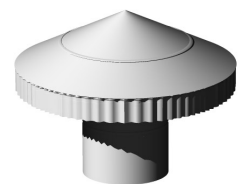
REDUCER



ANTI DOWNDRAFT COWL



GAS COWL

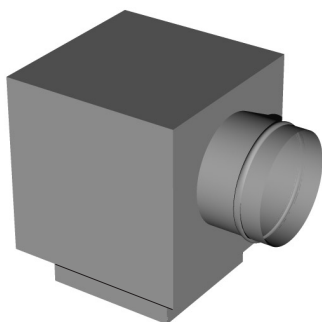


CHINAMANS HAT

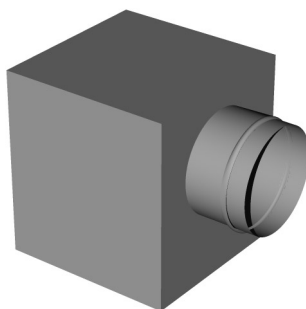


OTHER PRODUCT

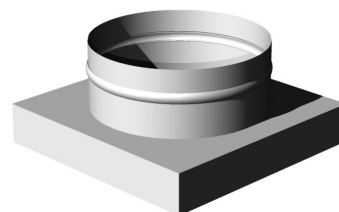
PRICES AVAILABLE ON REQUEST



SIDE ENTRY GRILLE BOX LINED



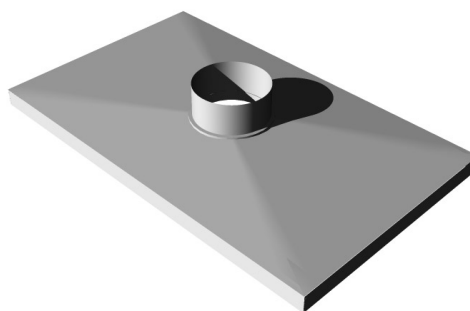
SIDE ENTRY GRILLE BOX PLAIN



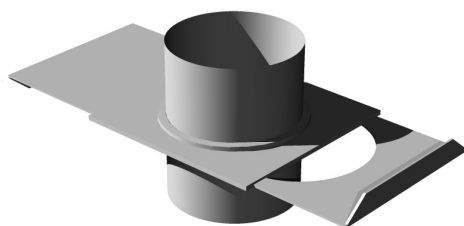
TOP ENTRY GRILLE BOX



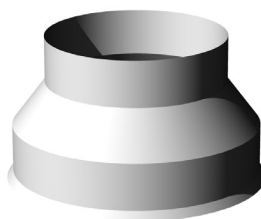
ACCESS PANEL



CHIMNEY CAP



BLAST GATE



CASING COVER



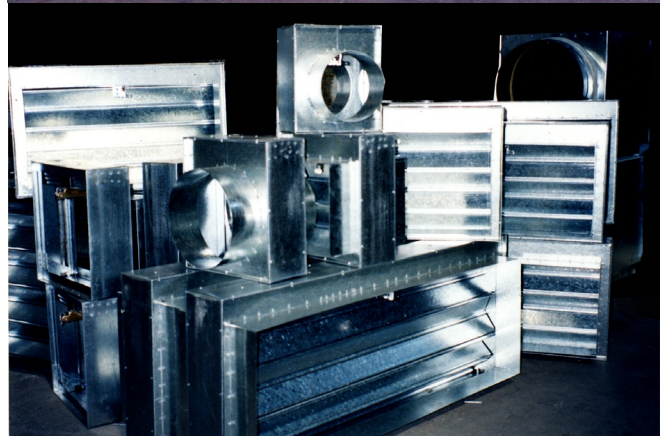
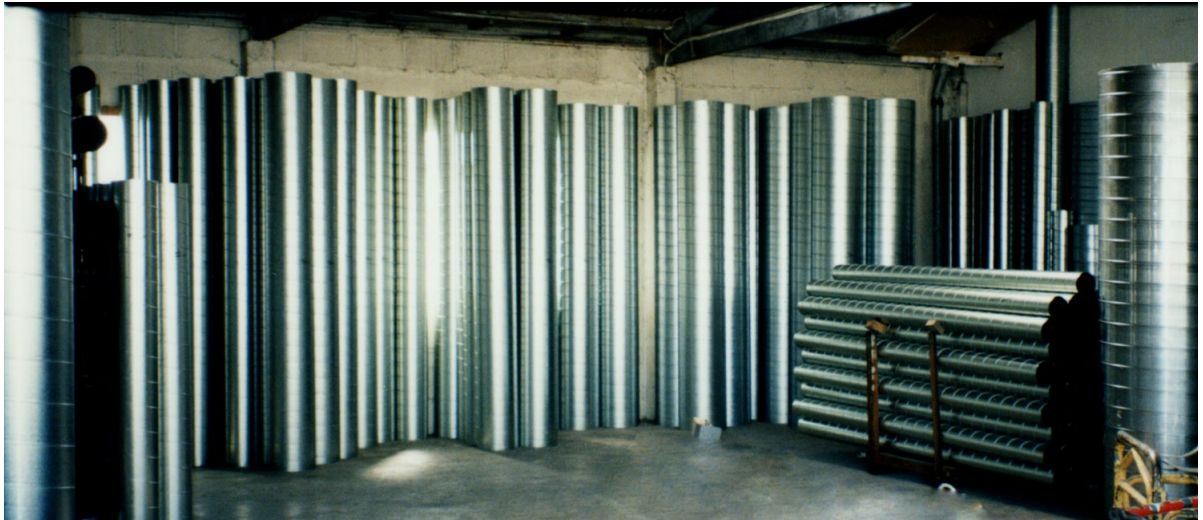
STAND OFF BRACKET

WE ALSO MAKE / SUPPLY TO ORDER

- Flashings
- Rainwater Heads
- General sheet metal products
- Perforated strapping
- Flexible duct connector

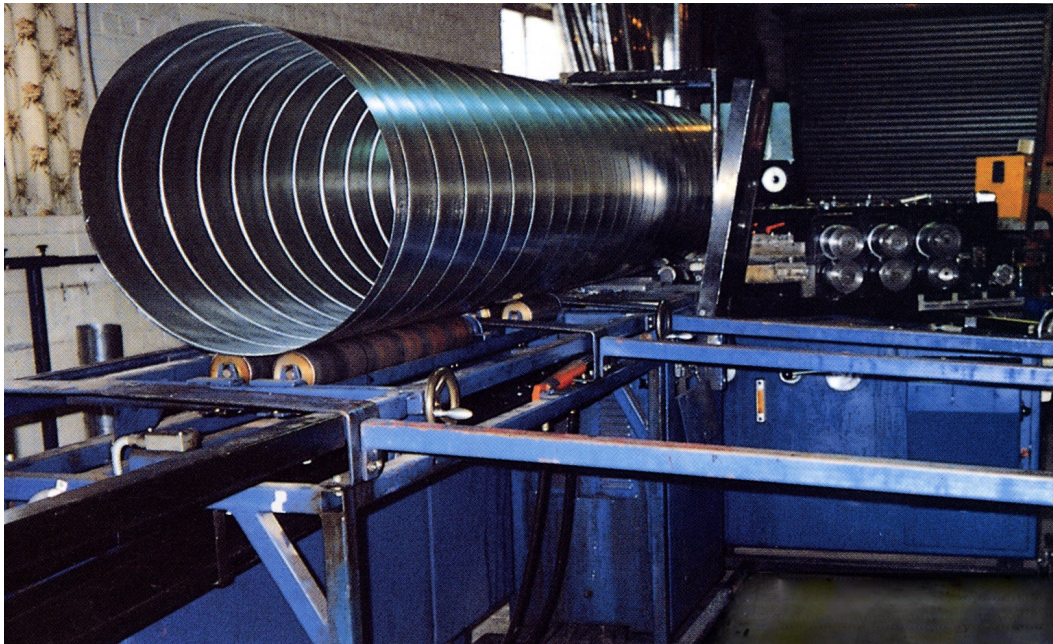


A FEW PRODUCT EXAMPLES



SPIRATUBE

We have our own Nokia machine



We carry extensive stocks in:
Galvanised 2 & 3 metre lengths
Stainless 3 metre lengths

We can also custom make in heavier gauges and longer lengths

SPIRATUBE USES:

- Duct for heating, ventilation and air conditioning
- Exhaust stacks
- Wood chip conveyers
- A casing for insulated oil supply pipe, chilled water pipes etc
- Concrete column and pile liners
- The barrel to support roller shutter doors and grilles
- A duct tube for joining pre-cast concrete componentry
- Fluming for water drainage projects
- Culvert pipe

ACOUSTIC AND THERMAL INSULATED DUCTS

Prices are available on application



SPIRATUBE S/STEEL

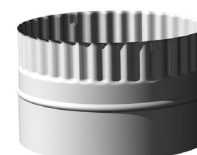
\$ PRICE PER METRE

DIAMETER (Nominal)	Wall thickness		CONNECTOR \$	END CAP \$
	0.55	0.7		
75	25.00		10.00	12.00
100	29.80	40.10	10.00	12.00
125	38.60	50.00	10.00	12.00
150	46.40	59.80	11.00	14.00
175	54.20	69.70	12.00	16.00
200	61.90	79.80	13.00	18.00
225	69.60	89.80	14.00	20.00
250	77.50	99.60	15.00	22.00
275	86.00	110.00	16.00	25.00
300	93.20	119.30	17.00	30.00
325	100.20	128.80	18.00	33.00
350	108.40	139.70	19.00	35.00
400	124.20	159.50	20.00	40.00
450	139.30	180.20	22.50	48.00
500	155.70	200.20	25.00	55.00
550	171.30	219.60	28.00	75.00
600	186.20	239.20	32.00	85.00
650	203.70	261.10		
700	219.60	281.50		
750	233.80	300.20		
800		321.70		
850		341.00		
900		360.20		
950		379.80		
1000		400.20		
1100		415.30		
1200		436.70		
1300		459.40		

Spiral



Connector



End Cap



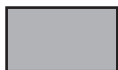
STOCK LENGTHS: 3 METRES



SPIRATUBE GALVANISED

\$ PRICE PER METRE

DIAMETER (Nominal)	Wall thickness					CONNECTOR \$	END CAP \$
	0.45	0.55	0.75	0.95	1.15		
75	6.70	8.40	10.30			6.00	10.00
100	7.30	8.80	11.80	14.80	17.40	6.00	10.00
125	9.10	10.80	14.50	18.30	21.80	6.00	10.00
150	10.80	13.00	17.40	21.80	26.20	6.50	10.00
175	12.70	15.30	20.20	25.30	30.40	7.00	11.00
200	14.40	17.40	23.10	28.90	34.60	7.50	12.00
225	16.30	19.60	26.20	32.40	39.10	8.00	13.00
250	18.10	21.80	29.00	36.10	43.40	8.50	14.00
275	19.90	23.80	32.00	39.70	47.90	9.00	15.50
300	21.90	26.20	34.60	43.60	52.20	9.50	17.00
325		28.20	37.40	47.00	56.10	10.00	18.00
350		30.40	40.50	50.80	60.80	10.50	19.00
400		34.60	46.30	58.00	69.50	11.00	21.00
450		39.10	52.10	65.10	77.80	12.00	23.00
500		43.60	58.00	72.30	86.80	13.00	26.00
550		47.90	63.60	80.10	96.30	16.00	30.00
600		56.70	69.50	86.80	104.10	18.00	36.00
650		26.70	75.50	94.70	113.20	21.00	40.00
700		60.50	81.40	102.10	121.20	24.00	45.00
750			86.70	108.60	130.10	26.00	50.00
800			93.00	116.70	140.80	30.00	80.00
850			98.50	123.40	150.20	32.00	100.00
900			104.00	130.10	157.70	33.00	115.00
950				137.40	165.80	35.00	135.00
1000				144.60	173.50	37.00	150.00
1100					187.40	41.00	170.00
1200					204.50	45.00	185.00
1300					219.50	50.00	200.00



Standard wall thickness

STOCK LENGTHS : 2 & 3 METRES

We can also custom make longer lengths



JENSEN ADJUSTABLE BENDS

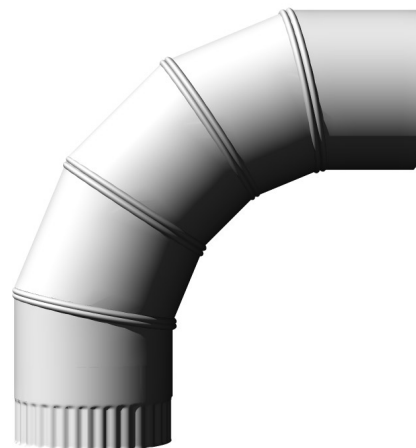
Jensen Adjustable Bends, sometimes known as a lobster back.

Available in both 45 ° and 90° bends

45 ° 3 segment
Adjustable
0 to 45 degrees

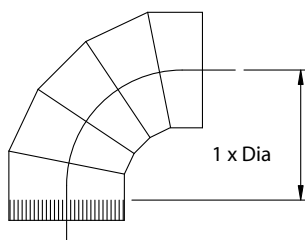


90 ° 5 segment
Adjustable
0 to 90 degrees

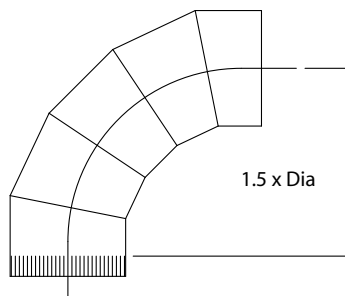


90° bends are available in short and long radius. The most commonly used is short radius.

Short Radius
1.0 Dia C/L Radius



Long Radius
1.5 Dia C/L Radius



- 5 segment bends provide smooth air flow through 90°
- We have an extensive range of bends in stock. Stocks are made from 0.55mm galvanised or stainless steel
- Jensen Bends are also available in 0.75mm galvanised and stainless steel
- Offsets can be obtained by joining two adjustable bends

Note: For low pressure systems the joints should either be sealed with metal sealant and/or duct tape after the angle is set.



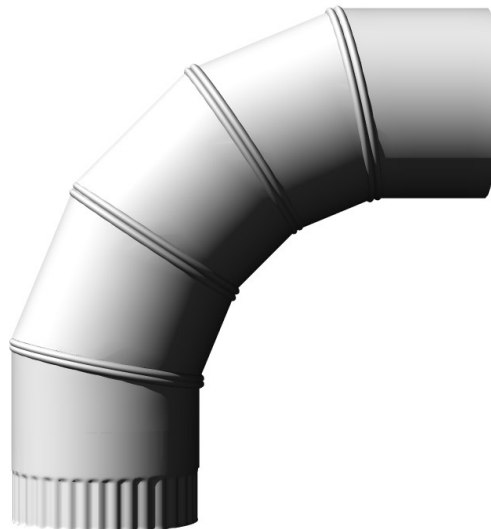
ADJUSTABLE BENDS

GALVANISED

DIAMETER	90° SHORT RADIUS \$	45° SHORT RADIUS \$	90° LONG RADIUS \$
75	14.00	11.50	16.70
100	15.70	12.90	18.90
125	18.00	14.80	21.60
150	18.70	15.30	22.50
175	21.40	17.70	25.80
200	24.00	19.70	28.80
225	31.60	26.00	38.00
250	33.90	27.80	40.60
275	41.90	34.40	50.30
300	49.00	40.20	58.90
325	58.50	48.00	70.10
350	67.50	55.40	81.00
375	81.00	66.50	97.20
400	89.90	73.70	108.00
450	101.80	83.50	122.20
500	108.70	89.10	130.40
550	122.90	100.80	
600	142.90	117.20	
650	157.50	129.20	
700	177.30	145.40	
750	230.60	189.00	

STAINLESS STEEL

DIAMETER	90° SHORT RADIUS \$	45° SHORT RADIUS \$
75	26.75	21.10
100	29.80	23.70
125	33.00	26.50
150	38.25	30.50
175	44.75	35.75
200	51.00	40.75
225	57.50	46.00
250	70.25	56.00
275	89.25	71.50
300	115.00	91.75
325	140.00	112.50
350	165.00	132.50
375	190.00	155.00
400	220.00	175.00
450	250.00	200.00
500	280.00	225.00
550	330.00	265.00
600	380.00	305.00



Long radius Stainless Steel prices available on application



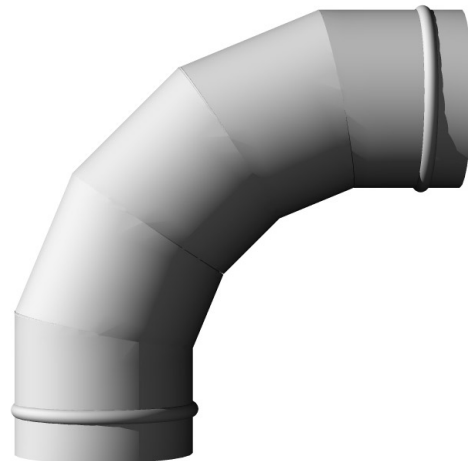
FIXED BENDS

GALVANISED

DIAMETER	90° SHORT RADIUS \$	45° SHORT RADIUS \$	90° LONG RADIUS \$
75	36.00	27.00	43.50
100	41.00	31.00	50.00
125	49.00	37.00	60.00
150	58.00	44.00	70.00
175	65.00	48.00	75.00
200	67.50	50.00	80.00
225	72.50	55.00	85.00
250	77.50	58.00	95.00
275	84.00	63.00	100.00
300	90.00	68.00	110.00
325	96.50	72.50	115.00
350	105.00	77.50	125.00
400	122.50	92.50	150.00
450	142.50	107.50	170.00
500	167.50	125.00	200.00
550	210.00	155.00	250.00
600	225.00	170.00	270.00
650	260.00	192.50	310.00
700	325.00	245.00	390.00
750	390.00	290.00	465.00
800	450.00	340.00	540.00
900	580.00	435.00	700.00
950	650.00	485.00	775.00
1000	710.00	535.00	850.00
1100	840.00	630.00	1005.00

STAINLESS STEEL

DIAMETER	90° SHORT RADIUS \$	45° SHORT RADIUS \$
75	72.50	55.00
100	82.50	62.50
125	105.00	77.50
150	115.00	85.00
175	125.00	95.00
200	135.00	100.00
225	145.00	110.00
250	155.00	120.00
275	165.00	125.00
300	180.00	135.00
325	230.00	170.00
350	275.00	205.00
400	370.00	280.00
450	470.00	350.00



Increased centre line radius and / or varying degrees available on request



REDUCERS

DIAMETER LARGE END	GALV \$	S/STEEL \$
100	28.00	43.00
125	29.00	44.00
150	30.00	45.00
175	32.00	47.00
200	35.00	50.00
225	38.00	56.50
250	41.00	62.50
275	44.00	69.00
300	48.00	75.00
325	52.00	81.50
350	55.00	87.50
400	62.00	100.00
450	72.00	112.50
500	82.00	137.50
550	120.00	162.50
600	135.00	187.50
650	145.00	225.00
700	160.00	262.50
750	170.00	
800	250.00	
900	300.00	
1000	370.00	

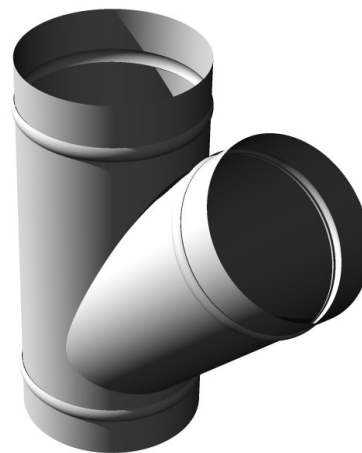


Transitions or square to round reducers also available.
Pricing on request.



ANGLE TEE

DIAMETER	GALV \$	S/STEEL \$
75	42.50	70.00
100	42.50	70.00
125	42.50	70.00
150	48.00	80.00
175	53.00	90.00
200	60.00	105.00
225	70.00	120.00
250	80.00	135.00
275	90.00	160.00
300	100.00	190.00
325	110.00	200.00
350	115.00	220.00
400	125.00	250.00
450	150.00	275.00
500	175.00	
550	215.00	
600	250.00	
650	285.00	
700	335.00	
750	390.00	
800	420.00	
850	430.00	
900	470.00	
950	520.00	
1000	580.00	
1100	645.00	
1200	710.00	
1300	850.00	

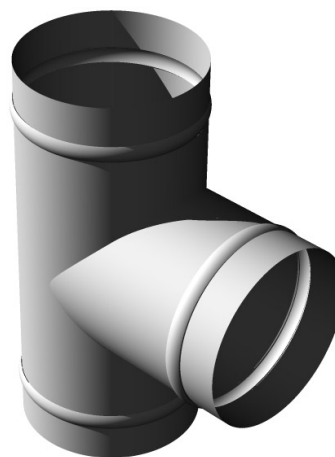


Standard branch angle
30°, 45°, 60°



EQUAL & UNEQUAL TEE'S

DIAMETER	GALV \$	S/STEEL \$
75	35.00	55.00
100	35.00	55.00
125	35.00	55.00
150	37.50	65.00
175	40.00	77.50
200	45.00	90.00
225	55.00	105.00
250	65.00	125.00
275	75.00	145.00
300	80.00	170.00
350	95.00	195.00
400	110.00	220.00
450	125.00	245.00
500	150.00	285.00
550	190.00	335.00
600	215.00	400.00
650	245.00	
700	285.00	
750	325.00	
800	350.00	
850	358.00	
900	390.00	
950	460.00	
1000	520.00	
1100	580.00	
1200	650.00	
1300	780.00	



REDUCING ANGLE TEE

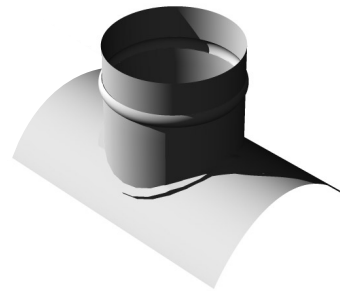
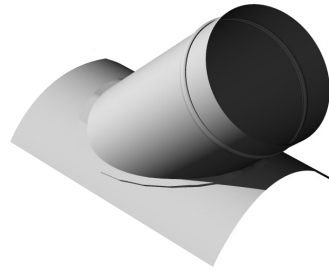
DIAMETERS	GALV \$
125/75/75	52.50
125/100/100	52.50
150/100/100	52.50
150/125/125	52.50
175/100/100	57.50
175/125/125	57.50
200/150/150	62.50
200/175/175	62.50
225/150/150	72.50
225/175/175	72.50
225/200/200	72.50
250/175/175	82.50
250/200/200	82.50
250/225/225	82.50
275/200/200	95.00
275/225/225	95.00
275/250/250	95.00
300/200/200	105.00
300/225/225	105.00
300/250/250	105.00
325/250/250	115.00
325/275/275	115.00
325/300/300	115.00
350/250/250	125.00
350/275/275	125.00
350/300/300	125.00
350/325/325	125.00
400/250/250	135.00
400/275/275	135.00
400/300/300	135.00
450/300/300	155.00
450/350/350	155.00
500/350/350	170.00
500/400/400	170.00
550/400/400	190.00
550/450/450	190.00
600/450/450	225.00
600/500/500	225.00



SADDLE T/OFF

GALVANISED

DIAMETER	30°, 45°, 60° \$	90° \$
75	27.00	22.00
100	27.00	22.00
125	27.00	22.00
150	28.00	23.00
175	29.00	24.00
200	32.50	26.00
225	36.00	29.00
250	41.50	34.00
275	48.50	40.00
300	58.00	46.00
325	65.00	51.00
350	73.00	58.00
400	90.00	77.00
450	101.00	87.00
500	120.00	98.00
550	135.00	120.00
600	175.00	142.00
650	230.00	162.00
700	290.00	220.00
750	360.00	290.00
800	485.00	370.00
900	505.00	415.00
950	525.00	435.00

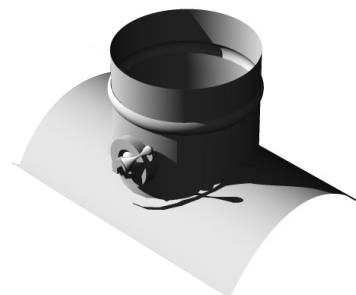
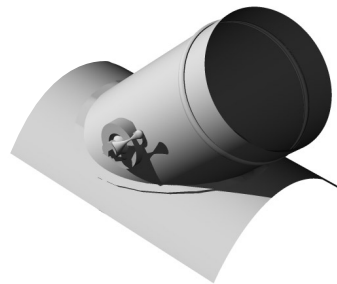


Flat plate options available

SADDLE T/OFF + DAMPER

GALVANISED

DIAMETER	30°, 45°, 60° \$	90° \$
75	42.00	37.00
100	42.00	37.00
125	42.00	37.00
150	44.00	38.00
175	48.00	42.00
200	52.00	46.00
225	60.00	52.00
250	67.00	59.00
275	77.00	65.00
300	90.00	77.00
325	100.00	83.00
350	115.00	93.00
400	135.00	114.00
450	150.00	128.00
500	170.00	142.00

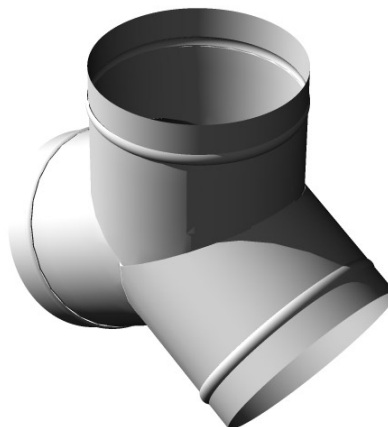


Flat plate options available



EQUAL SPLITTERS

DIAMETER	GALV \$
75	32.00
100	32.00
125	32.00
150	35.00
175	38.00
200	42.00
225	47.50
250	52.50
275	57.50
300	62.50
325	72.50
350	82.50



UNEQUAL SPLITTERS

DIAMETER	GALV \$
125/75/75	47.00
125/100/100	47.00
150/100/100	49.00
150/125/125	49.00
175/100/100	52.00
175/125/125	52.00
200/100/100	55.00
200/150/150	55.00
200/175/175	55.00
225/150/150	58.00
225/175/175	58.00
225/200/200	58.00
250/175/175	61.00
250/200/200	61.00
250/225/225	61.00
275/200/200	66.00
275/225/225	66.00
275/250/250	66.00
300/200/200	72.00
300/225/225	72.00
300/250/250	72.00
325/250/250	83.00
325/275/275	83.00
325/300/300	83.00
350/250/250	93.00
350/275/275	93.00
350/300/300	93.00
350/325/325	93.00
400/300/300	98.00
450/350/350	108.00



FLANGED SPIGOTS

DIAMETER	GALV \$	S/STEEL \$
75	6.50	10.00
100	6.50	10.00
125	6.50	10.00
150	7.00	11.00
175	7.50	12.00
200	8.00	13.00
225	8.50	14.00
250	9.00	15.00
275	10.00	16.00
300	11.00	18.00
350	12.00	21.00
400	13.00	24.00
450	14.00	27.00
500	17.00	30.00
550	20.00	35.00
600	24.00	42.00



QUADRANT DAMPER

DIAMETER	GALV 90° \$
75	26.00
100	26.00
125	26.00
150	27.00
175	28.00
200	29.00
225	31.00
250	33.00
275	35.00
300	37.00
325	40.00
350	42.00
400	52.00
450	72.00
500	88.00
550	103.00
600	124.00



Options: - in line
- flange mounted



ROUND PIPE

DIAMETER	GALV \$	S/STEEL \$
100	18.00	40.00
115	18.00	40.00
125	18.00	40.00
150	20.00	45.00
175	22.00	55.00
200	24.00	65.00
225	26.50	75.00
250	29.00	85.00
275	32.00	95.00
300	35.00	103.00
325	38.00	110.00
350	41.00	120.00
400	47.00	130.00
450	51.00	145.00
500	75.00	170.00
550	85.00	190.00
600	90.00	210.00
650	95.00	230.00
700	100.00	



1200mm long

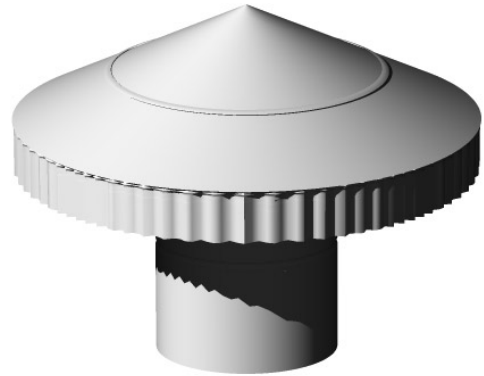
Pricing for other diameters and shorter
lengths available on request.



CHINAMANS HAT

Vent Cowl

DIAMETER	GALV \$	S/STEEL \$
75	42.00	65.00
100	42.00	65.00
125	42.00	65.00
150	48.00	75.00
175	56.00	85.00
200	62.00	95.00
225	75.00	115.00
250	83.00	135.00
275	90.00	155.00
300	110.00	190.00
350	135.00	230.00
400	165.00	280.00
450	195.00	340.00
500	225.00	440.00
550	280.00	520.00
600	335.00	610.00
700	380.00	
750	435.00	
800	525.00	
850	545.00	
900	580.00	
950	670.00	
1000	775.00	
1100	970.00	
1200	1170.00	



Includes inverted cone



ANTI DOWN DRAFT COWL

Wood fire

DIAMETER	GALV \$	S/STEEL \$
100	47.00	80.00
115	47.00	85.00
125	47.00	85.00
150	52.00	93.00
175	57.00	103.00
200	67.00	124.00
225	78.00	150.00
250	93.00	175.00
275	103.00	202.00
300	114.00	220.00

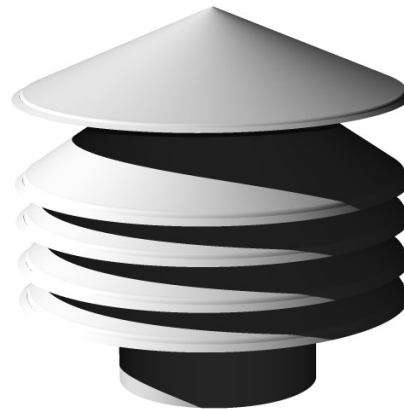


ANTI DOWN DRAFT COWL

GAS COWL

Gas fire

DIAMETER	GALV \$	S/STEEL \$
75	42.00	55.00
100	42.00	55.00
125	42.00	67.00
150	47.00	83.00
175	57.00	103.00
200	67.00	124.00
225	83.00	155.00
250	120.00	200.00
275	135.00	220.00
300	160.00	240.00



GAS COWL



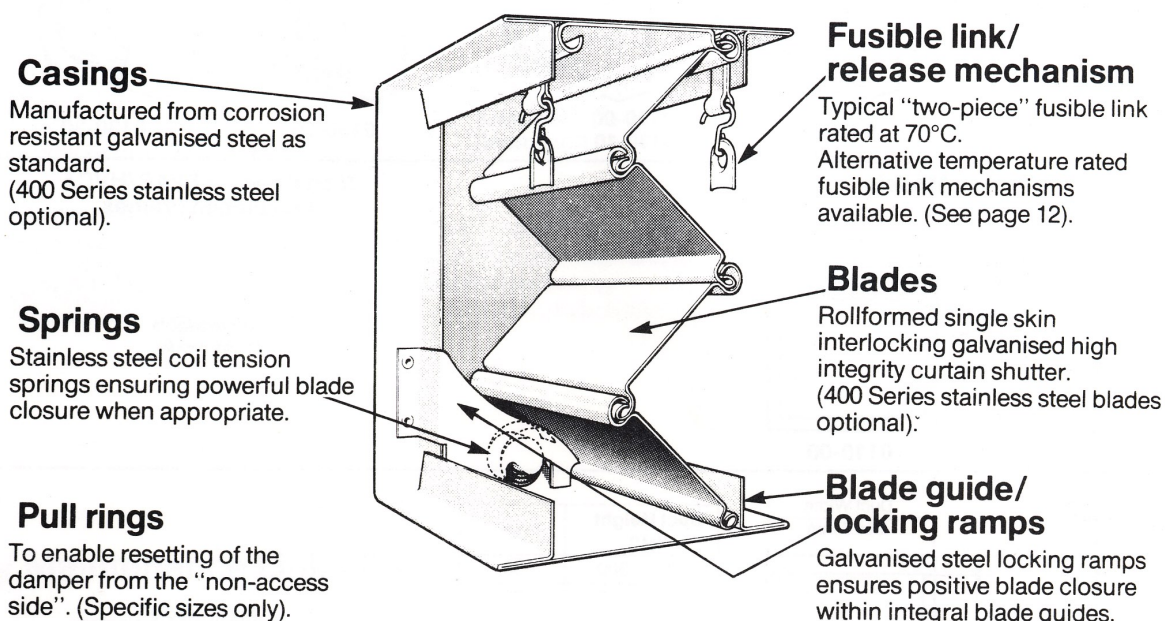
FIRE DAMPERS

Our range of fire dampers are designed to stop the spread of fire through ducts, walls and floors. The range incorporates features required by specifiers, contractors and fire authorities, and embodies the experience of Advanced Air (UK) Ltd, in the design and manufacture of our fire dampers.

Fire dampers have been fire tested to B.S. 476 part 8 FROSI report No. 6110.

Fire dampers are F.R.C. (NZ) approved.

PRODUCT FEATURES



The illustration is Model (P) Plain

Casings: are manufactured from 0.75mm galvanised steel

Blades: are specially rollformed from 0.75mm galvanised mild steel

Fusible Link: supplied rated at 70 degrees Celsius nominal

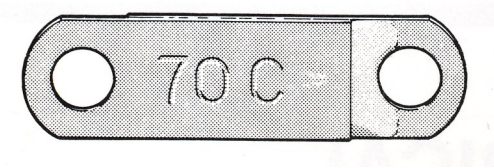
Features	Model References		
	Plain	Capped	Other
Spigot Connections			Yes
Case Depth Dimensions (nominal)	108mm	108mm	108mm
Maximum Duct Module Size (W x H)	1525 x 1525	1525 x 1350	1475 x 1350

All models, are as standard, manufactured from galvanised mild steel.



FUSIBLE ELEMENTS

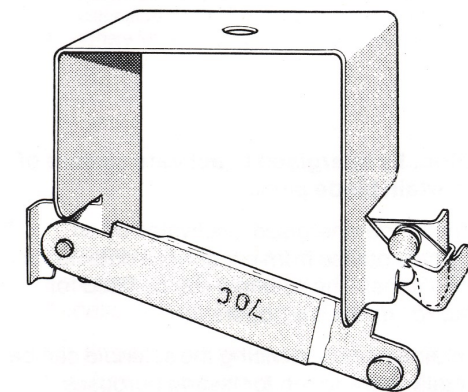
Flat Bar Link



This “Flat-Bar” Link is the standard link used, and is held in position by removable chain links.

70 degree Celsius Standard

Test Latch



Allows the Fire Damper to be tested quickly and safely. The damper can be mechanically released and reloaded with one hand on small units from indicated side of the duct.

WEIGHT CHART

Indicative weights in kilograms

Nominal Damper Size		WIDTH (mm)										
H E I G H T (mm)		150	200	300	400	450	600	750	900	1050	1200	1500
	200	1	2	2	3	3	5	6	6	8	9	10
	300	2	2	3	4	4	5	7	7	9	10	12
	450	3	3	4	4	5	7	7	8	10	12	15
	600	4	4	6	7	7	8	9	10	12	13	17
	750	4	5	6	8	8	9	10	11	12	14	19
	900	6	6	7	8	8	10	11	12	14	15	21
	1050	8	8	9	10	10	12	12	14	16	18	25
	1200	9	9	10	12	12	13	14	15	18	23	28
	1350	11	11	12	14	14	16	17	17	20	26	31
	1500	13	13	14	16	16	17	19	20	24	30	36

Notes:

1. Above weights are relevant to Plain models
2. Capped and Round Models a multiplier of 1.5 on the above weights should be used



ORDER REQUIREMENTS

When ordering Fire Dampers and Sleeves we require the following information

Fire Dampers

- Type (refer to coding below)
- Dimensions - always specify width first then height
- Horizontal or Vertical installation

Sleeves

- Thickness of wall, floor or ceiling
- Means of connecting to duct, both upstream and downstream

Fire Damper Coding

No.	Code	Name
1	FD	FIRE DAMPER
2	P	PLAIN
	C	CAPPED
	R	ROUND
	S	SQUARE / RECTANGULAR
	O	OVAL
3	V	VERTICAL
	H	HORIZONTAL
4	T	TEST LATCH

Examples of coding used when ordering :

	1	2	3	4
FDCHT	Fire Damper	/ Capped	/ Horizontal	/ Test Latch
FDSVT	Fire Damper	/ Square	/ Vertical	/ Test Latch

Notes:

For openings larger than our maximum sizes, multiple dampers would be required.

In a horizontal duct run should the velocity exceed 10m/sec, a spring assisted closure will be required.

All fire dampers must be tested when installed and then tested annually to comply with NZ Building Act and Local Council requirements.



INSTALLATION OF FIRE DAMPERS

1. Mounting in a wall, floor or ceiling the Fire Damper sleeve shall completely penetrate the wall and shall be retained: -
 - On both sides by means of mounting flanges in such a manner that it can expand in a fire without distorting the blades in a closed position.
 - On the accessible side by means of one mounting flange only, which can be fixed to the fire damper sleeve and to the wall through slotted holes to allow expansion.

Mounting flanges shall be butted against the face of the wall, floor or ceiling, and fixed to the fire damper sleeve. The width of the angle section of the flange shall be not less than twice the clearance between the fire damper body and the penetration.

2. The fire damper shall be installed so that the airflow does not impede the closure of the fire damper.
3. The method of attachment of ductwork to the fire damper shall be such that any deformation or collapse of the ductwork in a fire does not dislodge the fire damper or adversely affect its operation or performance. This is achieved by using either an "S" cleat type joint or flanged joint using nylon or aluminium bolts.
4. Trimmed opening size in wall, floor or ceiling is overall fire damper / sleeve size + 1% + 10mm both width and height. Insulated packing material around fire damper shall be placed in the space between the fire damper sleeve and surrounding construction in order to prevent free flow of combustion products. The material shall be packed so that it fills the space uniformly without impairing the operational performance of the fire damper. The surrounding material shall maintain its integrity at temperatures up to 1000°C.
5. The length of the fire damper sleeve to extend beyond the face of the wall, floor or ceiling shall not exceed 150mm for an "S" cleat joint or 80mm for a flanged joint.
6. Access panel required for on site annual testing.

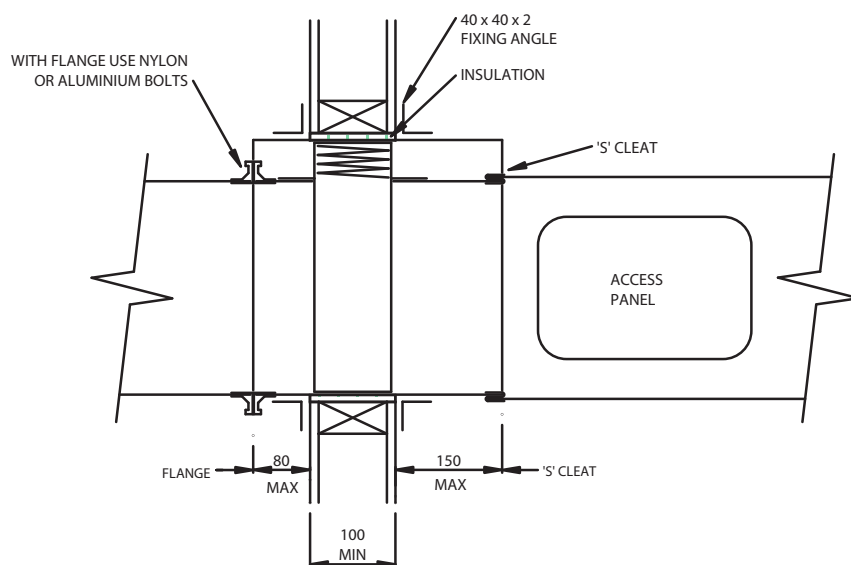
SLEEVE MATERIAL

Longest Side

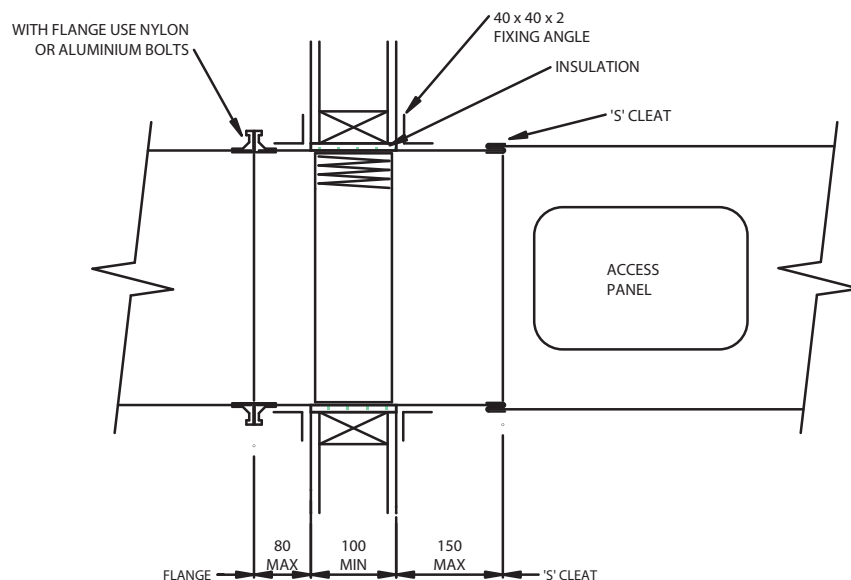
0 - 600	0.75 Galv M.S.	22 #
605 - 1000	0.95 Galv M.S.	20 #
1005 - 1500	1.15 Galv M.S.	18 #
1505 - 2400	1.55 Galv M.S.	16 #



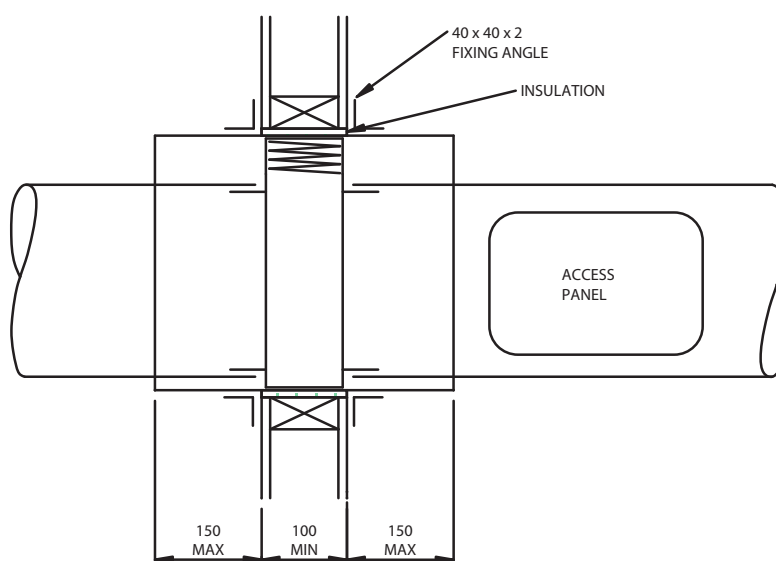
SLEEVE ARRANGEMENTS



CAPPED



PLAIN



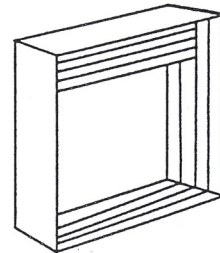
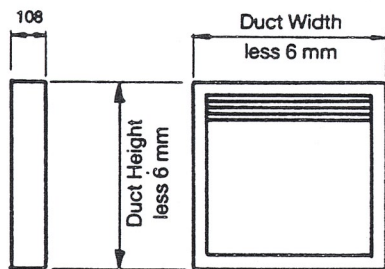
ROUND



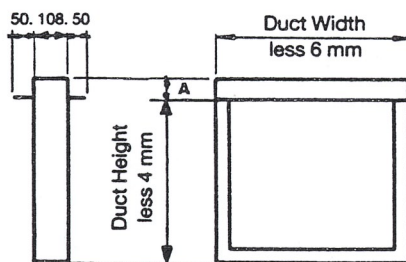
PRODUCT SELECTION GUIDE & DIMENSIONAL DATA

DIAGRAM

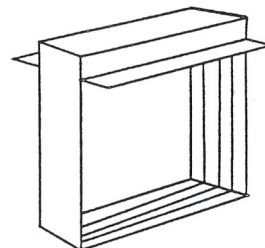
P
Plain



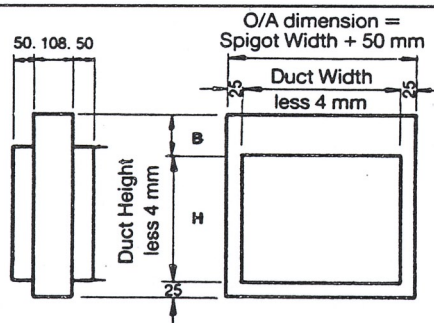
C
Capped



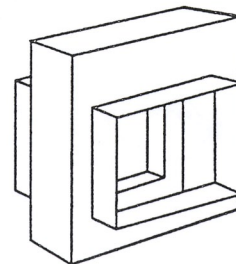
Duct Height H	A
100 – 300	50
301 – 525	75
526 – 700	100
701 – 925	125
926 – 1150	150
1151 – 1350	175



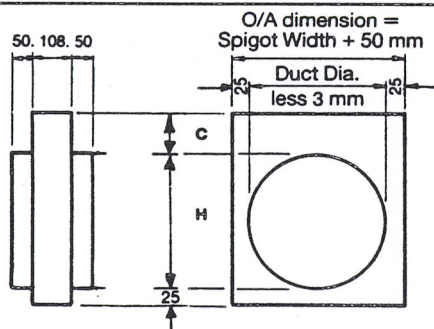
S
Square



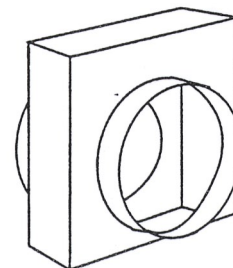
Duct Height H	B
100 – 300	50
301 – 525	75
526 – 700	100
701 – 925	125
926 – 1150	150
1175 – 1350	175



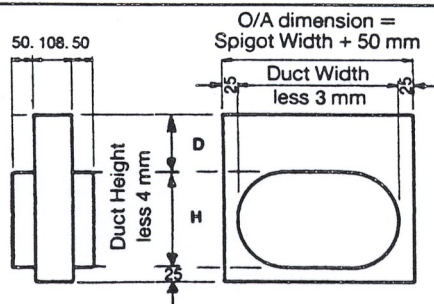
R
Round



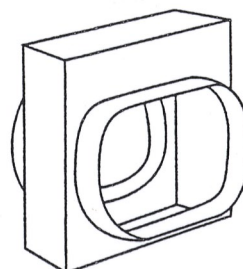
Duct Height H	C
100 – 300	50
301 – 525	75
526 – 700	100
701 – 925	125
926 – 1150	150
1175 – 1350	175



O
Oval



Duct Height H	D
100 – 300	50
301 – 525	75
526 – 700	100
701 – 925	125
926 – 1150	150
1175 – 1350	175



All dimensions in mm.



FDPVT

FIRE DAMPER: PLAIN, VERTICAL, TEST LATCH

WIDTH

mm	150	200	250	300	350	400	450	500	550	600	650	700	750	800	900	1000	1100	1200
150	59	62	64	67	70	74	79	84	88	93	97	102	107	111	120	129	136	146
200	62	64	67	70	74	79	84	88	93	97	102	107	111	115	125	134	142	153
250	64	67	70	74	79	84	88	93	97	102	107	111	115	121	132	140	149	159
300	67	70	74	79	84	88	93	97	102	107	111	115	121	125	138	146	155	164
350	70	74	79	84	88	93	97	102	107	111	115	121	125	132	144	153	161	171
400	74	79	84	88	93	97	102	107	111	115	121	125	132	138	150	159	167	178
450	79	84	88	93	97	102	107	111	115	121	125	132	138	145	157	164	173	183
500	84	88	93	97	102	107	111	115	121	125	132	138	145	153	162	171	179	187
550	88	93	97	102	107	111	115	121	125	132	138	145	153	160	168	178	186	196
600	93	97	102	107	111	115	121	125	132	138	145	153	160	167	174	183	191	202
650	97	102	107	111	115	121	125	132	138	145	153	160	167	174	181	189	198	208
700	102	107	111	115	121	125	132	138	145	153	160	167	174	181	187	196	205	214
750	107	111	115	121	125	132	138	145	153	160	167	174	181	187	192	202	210	219
800	111	115	121	125	132	138	145	153	160	167	174	181	187	194	200	210	219	230
900	120	125	132	138	144	148	157	162	168	174	181	187	192	200	210	219	230	238
1000	129	134	140	146	153	159	164	171	178	183	189	196	202	210	219	230	238	248
1100	136	142	149	155	161	167	173	179	186	191	198	205	210	219	230	238	248	258
1200	146	153	159	164	171	178	183	187	196	202	208	214	219	230	238	248	258	267

HEIGHT





FDPHT

FIRE DAMPER: PLAIN, HORIZONTAL, TEST LATCH

WIDTH

mm	150	200	250	300	350	400	450	500	550	600	650	700	750	800	900	1000	1100	1200
150	93	95	97	99	102	107	112	116	122	125	130	134	140	144	153	161	170	179
200	95	97	99	102	107	112	116	122	125	130	134	140	144	148	158	167	176	186
250	97	99	102	107	112	116	122	125	130	134	140	144	148	154	164	173	181	191
300	99	102	107	112	116	122	125	130	134	140	144	148	154	158	171	179	188	197
350	111	114	121	125	130	133	138	142	148	153	157	161	165	173	185	193	203	211
400	114	121	125	130	133	138	142	148	153	157	161	165	173	179	190	201	208	218
450	121	125	130	133	138	142	148	153	157	161	165	173	179	186	197	206	213	225
500	125	130	133	138	142	148	153	157	161	165	173	179	186	193	204	211	219	228
550	130	133	138	142	148	153	157	161	165	173	179	186	193	202	209	218	227	236
600	133	138	142	148	153	157	161	165	173	179	186	193	202	208	215	225	233	242
650	150	156	161	164	157	174	179	186	191	200	207	213	222	228	235	242	252	261
700	156	161	164	170	174	179	186	191	200	207	213	220	228	235	240	250	258	267
750	161	164	170	174	179	186	191	200	207	213	220	228	235	240	248	256	264	274
800	164	170	174	179	186	191	200	207	213	220	228	235	240	249	254	264	274	284
900	173	179	186	191	197	204	210	216	223	228	235	240	248	254	264	274	284	292
1000	205	210	216	223	229	235	240	248	254	259	265	271	279	287	296	306	314	323
1100	212	218	225	232	237	242	250	255	261	267	274	281	286	296	306	314	323	334
1200	223	229	235	240	248	254	259	263	271	279	284	289	296	306	314	323	334	344

HEIGHT

FDCVT

FIRE DAMPER: CAPPED, VERTICAL, TEST LATCH

WIDTH

mm	150	200	250	300	350	400	450	500	550	600	650	700	750	800	900	1000	1100	1200
150	64	67	70	74	79	85	90	95	100	109	113	119	124	131	140	150	162	173
200	67	70	74	79	85	90	95	100	109	113	119	124	131	137	147	160	171	184
250	70	74	79	85	90	95	100	109	113	119	124	131	137	144	157	168	180	192
300	74	79	85	90	95	100	109	113	119	124	131	137	144	150	164	177	189	204
350	79	85	90	95	100	109	113	119	124	131	137	144	150	160	172	186	200	212
400	85	90	95	100	109	113	119	124	131	137	144	150	160	167	181	193	209	223
450	90	95	100	109	113	119	124	131	137	144	150	160	167	176	189	204	218	233
500	95	100	109	113	119	124	131	137	144	150	160	167	176	185	197	211	229	241
550	100	109	113	119	124	131	137	144	150	160	167	176	185	192	206	219	238	253
600	109	113	119	124	131	137	144	150	160	167	176	185	192	203	213	229	249	261
650	113	119	124	131	137	144	150	160	167	176	185	192	203	210	223	237	258	271
700	119	124	131	137	144	150	160	167	176	185	192	203	210	218	232	245	267	282
750	124	131	137	144	150	160	167	176	185	192	203	210	218	228	239	255	279	290
800	131	137	144	150	160	167	176	185	192	203	210	218	228	236	249	263	282	302
900	140	147	157	164	172	181	189	197	206	213	223	232	239	249	263	282	302	321
1000	150	160	168	178	186	193	204	211	219	229	237	245	255	263	282	302	321	341
1100	162	171	180	189	200	209	218	229	238	249	258	267	279	287	302	321	341	352
1200	173	184	192	204	212	223	233	241	253	261	271	282	290	302	321	341	352	361

HEIGHT





FDCHT

FIRE DAMPER: CAPPED, HORIZONTAL, TEST LATCH

WIDTH

mm	150	200	250	300	350	400	450	500	550	600	650	700	750	800	900	1000	1100	1200
150	97	99	102	107	112	118	123	127	133	141	146	153	157	163	173	184	194	206
200	99	102	107	112	118	123	127	133	141	146	153	157	163	170	180	192	204	216
250	102	107	112	118	123	127	133	141	146	153	157	163	170	177	189	202	212	226
300	107	112	118	123	127	133	141	146	153	157	163	170	177	184	197	210	223	236
350	121	126	131	136	141	149	155	160	164	172	178	185	191	202	212	227	239	254
400	126	131	136	141	149	155	160	164	172	178	185	191	202	208	223	235	251	263
450	131	136	141	149	155	160	164	172	178	185	191	202	208	216	230	243	259	274
500	136	141	149	155	160	164	172	178	185	191	202	208	216	226	238	253	270	283
550	141	149	155	160	164	172	178	185	191	202	208	216	226	234	248	260	280	293
600	149	155	160	164	172	178	185	191	202	208	216	226	234	242	255	270	288	303
650	167	173	178	185	190	197	205	213	220	229	238	248	256	264	276	290	312	324
700	173	178	185	190	197	205	213	220	229	238	248	256	264	272	285	300	321	335
750	178	185	190	197	205	213	220	229	238	248	256	264	272	282	293	308	332	345
800	185	190	197	205	213	220	229	238	248	256	264	272	282	289	302	317	335	355
900	193	202	210	218	226	235	242	252	259	267	276	285	293	302	317	335	378	375
1000	227	236	243	254	261	270	280	287	296	305	313	321	331	339	357	378	397	417
1100	238	248	256	265	275	285	295	305	314	323	334	344	354	364	378	397	417	427
1200	250	259	269	280	288	298	308	318	329	337	347	357	367	378	397	417	427	438

HEIGHT

FDSVT

FIRE DAMPER: SQUARE, VERTICAL, TEST LATCH

WIDTH

mm	150	200	250	300	350	400	450	500	550	600	650	700	750	800	900
150	92	96	106	113	121	129	136	145	154	160	167	174	182	203	213
200	96	106	113	121	129	136	145	154	160	167	174	182	203	213	227
250	106	113	121	129	136	145	154	160	167	174	182	203	213	227	253
300	124	136	147	156	168	185	191	203	211	224	235	242	255	265	279
350	136	147	156	168	185	191	203	209	216	232	240	255	265	279	287
400	142	154	164	174	191	203	209	216	224	235	242	265	279	287	297
450	154	164	174	191	203	209	216	224	235	242	265	279	287	297	312
500	172	187	205	213	227	242	249	259	267	279	295	312	328	341	361
550	187	205	213	227	240	249	259	267	279	295	312	328	341	361	376
600	205	213	227	240	249	259	267	279	295	312	328	341	361	376	402
650	213	227	240	249	259	267	279	295	312	328	341	361	376	402	417
700	227	240	249	259	267	279	295	312	328	341	361	376	402	417	435
750	240	249	259	267	279	295	312	328	341	361	376	402	417	435	449
800	249	259	267	279	295	312	328	341	361	376	402	417	435	449	464
900	259	267	279	295	312	328	341	361	376	402	417	435	449	464	484

HEIGHT





FDSHT

FIRE DAMPER: SQUARE, HORIZONTAL, TEST LATCH

WIDTH

mm	150	200	250	300	350	400	450	500	550	600	650	700	750	800	900
150	124	129	138	146	154	161	168	178	186	192	201	207	215	235	248
200	129	138	146	154	161	168	178	186	192	201	207	215	235	248	259
250	138	146	154	161	168	178	186	192	201	207	215	235	248	259	285
300	157	168	180	188	202	217	225	235	243	256	267	276	287	298	311
350	177	188	196	209	226	233	242	251	257	272	282	296	306	319	329
400	184	193	206	215	233	242	251	257	264	276	284	306	319	329	337
450	193	206	215	233	242	251	257	264	276	284	306	319	329	337	353
500	212	228	245	255	267	284	288	301	308	319	335	353	368	382	401
550	228	245	255	267	284	288	301	308	319	335	353	368	382	401	417
600	245	255	267	284	288	301	308	319	335	353	368	382	401	417	444
650	267	281	295	302	313	321	332	348	366	381	395	415	430	458	471
700	281	295	302	313	321	332	348	366	381	395	415	430	458	471	489
750	295	302	313	321	332	348	366	381	395	415	430	458	471	489	504
800	302	313	321	332	348	366	381	395	415	430	458	471	489	504	518
900	313	321	332	348	366	381	395	415	430	458	471	489	504	518	538

HEIGHT

FDRVT / FDRHT

FIRE DAMPER: ROUND, VERTICAL / HORIZONTAL, TEST LATCH

mm	150	200	250	300	350	400	450	500	550	600	650	700	750	800	900
VERTICAL	92	104	122	149	180	207	235	285	312	341	388	423	462	498	551
HORIZONTAL	123	138	157	185	224	251	279	329	355	384	430	480	520	556	607





JENSEN METAL PRODUCTS (NZ) LIMITED

APPLICATION FOR CREDIT ACCOUNT

ACCOUNT NAME _____

POSTAL ADDRESS _____

DELIVERY ADDRESS _____

PHONE _____ FAX _____ MOBILE _____

E-MAIL ADDRESS _____

MAIN BUSINESS ACTIVITY _____

CONTACT NAME _____ POSITION _____

CREDIT AMOUNT REQUIRED \$ _____ ORDER NO. USED YES / NO

CREDIT REFERENCES (3 REQUIRED)

COMPANY _____ PHONE _____

COMPANY _____ PHONE _____

COMPANY _____ PHONE _____

BANK _____ BRANCH _____

LIST DIRECTORS / PRINCIPLES OF COMPANY

_____ PAID UP CAPITAL \$ _____

- 1) WE AGREE TO ABIDE BY JENSEN METAL PRODUCTS (NZ) LTD CONDITIONS OF SALE AS DETAILED ON THE REVERSE OF THIS APPLICATION FORM.
- 2) WE AGREE THAT CREDIT REFERENCES MAY BE APPROACHED IN ORDER TO ASSIST IN PROCESSING THIS APPLICATION.
- 3) WE DO / DO NOT AGREE TO JENSEN METAL PRODUCTS (NZ) LTD RELEASING CREDIT INFORMATION IF REQUESTED TO DO SO BY A THIRD PARTY.

NOTE: ACCOUNTS UNPAID AT 60 DAYS WILL INCUR AUTOMATIC CANCELLATION OF CREDIT AND NO GOODS WILL BE ISSUED UNTIL OVERDUE AMOUNT IS RECEIVED.

PLEASE SIGN THIS APPLICATION, INITIAL THE REVERSE AND RETURN.

SIGNED _____ POSITION _____

PRINT NAME _____ DATE _____

2 5 2 C H U R C H S T R E E T , O N E H U N G A
P H O N E : 0 9 6 3 4 3 1 1 6 , F A C S I M I L E : 0 9 6 3 6 4 6 0 2
P . O . B O X 1 2 - 4 6 7 , P E N R O S E , A U C K L A N D , N E W Z E A L A N D

STANDARD CONDITIONS OF SALE

JENSEN METAL PRODUCTS LIMITED

1. Definitions

In these conditions –

“The Quotation” – means the quotation on the terms and conditions as set out below for the supply of goods set out in the First Schedule.

“The Contract” – means the contract arising out of acceptance by the Customer of the Quotation.

“The Customer” – means the Customer referred to in the Quotation.

“The Supplier” – means the Supplier referred to in the Quotation.

“The Goods” – means the whole or any part of the goods specified in the Quotation.

“The Premises” – means the premises specified in the Quotation.

“The Price” – means the total price of the goods and the works as set out in the Quotation.

“The Work” – means the whole or part of the work and performance of services described in the Quotation.

2. The Goods to be Supplied

The Supplier will supply the goods to the Customer and will deliver the goods to the place where specified for delivery in the Quotation and in accordance with the terms of the Contract.

3. Installation

Unless specified in the quotation the Supplier shall not be responsible for installation of the goods and shall not be responsible for any damage whatsoever to any goods or any other thing whatsoever caused by installation of the goods.

4. Payment

In consideration of the Supplier supplying the goods to the Customer, the Customer will pay to the Supplier the price which shall be paid in the following manner:

- The deposit if referred to in the Quotation, will be paid by the Customer to the Supplier upon the Customer accepting the Quotation, time being of the essence; and
- The balance of the price shall be paid by the Customer to the Supplier in accordance with clause 7 herein.

5. Variations and Measurements

Where the price is based on measurements, descriptions or other facts furnished to the Supplier by the Customer, then if any of those measurements descriptions or facts prove to be inaccurate the Supplier may make such increase or decrease in the price as the Supplier deems necessary because of such inaccuracy.

6. Delay

The Supplier will use its best endeavours to deliver the goods to the Customer on the expected date of delivery specified in the Quotation but the Supplier shall be under no liability to the Customer should performance or continued performance by the Supplier of the Contract be wholly or partly delayed or prevented by the Supplier's inability to procure materials, due to any act of God, war, strike, lockout, fire or any other matter beyond the Supplier's control.

7. Conditions as to Payment

- Payment for the goods shall be made by the Customer in full on the 20th of the month following delivery. If the Customer makes default in payment, commits any act of bankruptcy or (where the Customer is a company) if the Customer is wound up either voluntarily or by order of the Court or if a receiver or manager of the Customer is appointed, the Supplier may at any time without notice to the Customer, suspend or terminate the Contract. Ownership of the goods will remain with the Supplier until the price has been paid in full by the Customer.
- The Customer will make all payments due to the Supplier whether in respect of the purchase price or for any other reason in full without deductions of any nature whatsoever whether by way of set off, counter claim or other equitable or lawful claim or otherwise howsoever.
- Any discounts offered will be forfeited on any account not paid by due date.

8. Interest on Outstanding Price

If the Customer fails to make any payment due to the Supplier by the due date for payment the Customer shall pay to the Supplier default interest on that amount at a rate 4% above the current overdraft rate charged by the Supplier's bank at the due date, for the period during which it remains unpaid which interest accrues on a daily basis before as well as after judgment. The Customer is also liable to pay all expenses and legal costs of the Supplier (calculated as between solicitor and own client) in relation to the recovery of all payments then due. This provision is not a waiver of the Customer's default and the interest rate is not an extension of credit to the Customer but is a genuine pre-estimate of the Supplier's loss caused by the Customer's failure to pay on the due date.

9. Delay in Acceptance by the Customer

Notwithstanding Clause 1 if the Customer is for any reason unable to accept delivery of the goods beyond fourteen (14) days after the expected date of delivery specified in the Quotation the Customer shall pay to the Supplier a sum of money which, together with any deposit which may have been requested, equals 50% of the price. If the Customer does not increase the deposit as above, or is for any reason unable or unwilling to accept delivery of the goods beyond three (3) months after the expected date of delivery specified in the Quotation the Supplier may terminate the contract which shall then be deemed to be at an end. In the event of such determination the Supplier may at its option resell the goods and retain the deposit in accordance with Clause 10.

10. Termination After Acceptance of Quotation

If the Contract is terminated by the Customer after production has commenced or by the Supplier pursuant to Clause 9 then the Supplier may retain the deposit in full.

11. Componentry Price Fluctuations

The Customer acknowledges that items purchased on behalf of the Customer such as fans, grilles and filters, etc will be subject to price fluctuations which are beyond the control of the Supplier. Wherever possible any price fluctuation for these items will be notified to the Customer and the price shall be varied accordingly.

12. Work Not Included in the Quotation

Unless specifically set forth in the Quotation the work does not include any plumbing, electrical, painting or other construction work.

13. Agreement in Writing

The Customer and the Supplier agree that this contract and the Quotation constitute the whole of the agreement between the parties and that there are no collateral agreements between the parties relating to the subject matter of the Contract. The Customer acknowledges that he/she was not induced to enter in the Contract by any representation made by or on behalf of the Supplier or any of its employees as to the suitability of the goods or as to any other matter or thing.

14. Warranty

- The Supplier warrants the goods which it manufactures against faulty workmanship and/or materials for a period of one (1) year after delivery.
- This warranty will not apply if the goods are repaired by any person not authorised by the Supplier to do such repairs or if the goods are used other than for the purpose for which they were intended.
- This warranty only applies to goods manufactured by the Supplier. Any parts components or materials obtained by the Supplier from other sources are not covered by this warranty. Such parts components or materials shall be covered by the manufacturer's warranty (if any) only.
- This warranty is exclusive and all other warranties descriptions representations or conditions as to fitness or suitability for any purpose, tolerance to any condition, merchantability or otherwise whether in a like

nature or not and whether expressed or implied by law, trade, customer or otherwise are expressly excluded.

15. Supplier's Liability

The Supplier's liability for defective goods and loss caused by defective goods is limited to, at the Supplier's option, either:

- Replacing, at the premises, any goods which the Customer is entitled to reject pursuant to Clause 16; or
- Refunding the sale price of those goods rejected.
- The Supplier shall not be liable for any consequential loss arising from any defect in materials, workmanship or installation.

16. Notification of Claims

No claim based on defective goods will be allowed and no rejection of the goods will be allowed unless:

- The claim is notified to the Supplier within seven (7) days of the defect becoming apparent from a reasonable inspection of the goods. Where possible the Customer or his appointed agent shall inspect and accept the goods ex-factory prior to delivery.
- The Supplier is given a reasonable opportunity to investigate the claim.

17. Shortages in Quantity

The Supplier will not be liable for shortages in quantity of the goods unless:

- The claim is notified to the Supplier within seven (7) days of receipt of the goods by the Customer; and
- The Supplier is given a reasonable opportunity to investigate the claim.

18. Damage in Transit

- In the event that the Supplier agrees in its quotation to supply “free into the buyer's premises” delivery shall be deemed complete when the goods are transported to the Customer's premises or to the place agreed by the Supplier in its quotation.
- In the event that the Supplier agrees in its quotation to supply “ex-works the Supplier” delivery shall be deemed complete when the Supplier has placed the goods at the disposal of the Customer, or delivered the goods into the possession of the freight company transporting the goods on behalf of the Customer. The Supplier may agree to arrange freight and/or insurance as agents for and on behalf of the Customer. All such costs of freight and/or insurance shall be the exclusive responsibility of the Customer and all sums paid by the Supplier shall be repaid by the Customer to the Supplier immediately upon being invoiced for them. No agreement to arrange freight on behalf of the Customer shall be deemed to change in any manner the ex-works nature of the sale.
- The Supplier shall not be liable for any damage resulting from transportation of the goods unless the Supplier is notified of such damage within twenty four (24) hours of receipt of the goods.

19. Retention of Title

- Property in any goods delivered by the Supplier to the Customer shall not pass (and the Customer shall be a bailee only in respect of such goods) until such a time as the Customer has paid to the Supplier the full price of such goods together with the full price of any other goods purchased from it by the Customer. Until such time as the Customer becomes the owner of the goods he will store them on his premises separately from his own goods or those of any other person and in a manner which makes them readily identifiable as the Supplier's goods.
- The Customer's rights to possession of the goods shall cease if he fails to comply strictly with these conditions or if the Customer (not being a company), commits an available act of bankruptcy or if the Customer (being a company), does anything or fails to do anything which would entitle a receiver to take possession of any of its assets or which would entitle any person to present a petition for winding up or if the Customer goes into liquidation or if the Customer breaches the terms of any mortgage over the premises.
- Subject to the terms hereof, the Customer may incorporate the goods in or with any other property (the property resulting from such incorporation being hereinafter described as “the new property”) but subject to the following express conditions:
 - In the case of incorporation with or fixture to any property of the Customer the new property shall on such incorporation or fixture become and/or be deemed to be owned separately by the Customer and the Supplier in such shares as the value of the goods and the value of the Customer's property into which the goods have been incorporated or affixed bears to the value of the new property.
 - If the Supplier's goods are incorporated with or fixed to property owned by any other person or persons (other than the Customer) or are processed with or incorporated therein, the new property shall become or shall be deemed to be owned in common with that other person or persons. The new property shall be owned in common in such shares as the value of the inputs by the Supplier and the value of that other person or persons property into which the goods have been incorporated or affixed bear to the total value of the new property.
- The Customer may agree to sell on the Supplier's goods but on the express condition that such an agreement to sell shall take place as agents and bailees for the Supplier whether the Customer sells on its own accord or not and that the entire proceeds thereof are held in trust for the Supplier and are not mingled with any other moneys and shall at all times be identifiable as the Supplier's moneys.
 - If the Customer has not received the proceeds of any such sale he will, if called so to do by the Supplier within seven (7) days thereof assign to the Supplier all rights against the person or persons to whom he has supplied the Supplier's goods.
- The Customer may agree to sell on the new property but on the express condition that as between the Customer and Supplier such an agreement to sell shall take place as agents and bailees for the Supplier whether the Customer sells on its own accord or not and that the entire proceeds thereof are held in trust for the Supplier and for any other person having an interest in the new property in the same shares in which the new property was owned and are not mingled with any other moneys and shall at all times be identifiable as moneys held under this clause.
- If the Customer has not received the proceeds of any sale of the new property he will, if called so to do by the Supplier, within seven days thereof assign to the Supplier all rights against the person or persons to whom he has supplied the new property.
- Prior to the Customer acquiring property in any goods the Supplier or its representatives agents or servants may at any time enter upon the Customer's land or premises where it believes such goods may be to view and inspect the same and/or repossess them if the Customer's right to possession of the goods has ceased. Such right of repossession shall continue notwithstanding incorporation or affixing of the goods to or with other property.
- In the event of such repossession the Customer irrevocably authorises the Supplier and/or its agents to enter any of its premises of the Customer using such reasonable force as is necessary. The Customer agrees to indemnify the Supplier and its agents for any liability arising from any act of trespass committed by such entry.

20. Risk and Insurance

Notwithstanding that property in any goods may remain with the Supplier all risk in respect of the goods passes to the Customer upon delivery. Upon delivery of the goods the Customer will insure and keep insured the goods for their full insurable value.